



FITTINGS 111-127

Table of Contents	PAGE
Push-Lock Air Brake Fittings	111
Nylon Air Brake Tube Fittings	113
Air Brake Compression Fittings	114
Reusable Air Hose Fittings	115
Discharge Hose Fittings	117
Pipe Fittings	118
SAE 45° Flare Fittings	119
Inverted Flare Fittings	120
Truck and Trailer Repair Kits	121
Fittings Display and Assortments	122
Hose Clamp and Coolant Valves	123
Heavy Duty Truck Radiator Caps	126
Clevis and Clevis Pins	127

VELVAC Original Indicates an original Velvac product.

NEW Indicates a new product added to catalog.

Revised Part No. Indicates a revised part number defining “-xx” package quantity.
Refer to price list for price per package.

For quantity and packaging information, refer to our price list.

Customer Service: 800.783.8871
Fax: 262.786.4101
Email: sales@velvac.com



NOTE: The information and photographs in this catalog are believed to be accurate and factual as of the print date. Velvac assumes no responsibility for information that may be incorrect or has changed since press time. Product specifications and offerings subject to change without notice.

Velvac is a registered trademark of Velvac, Inc.
Hi-Torque, Constant-Torque, and Euro-Seal are registered trademarks of Breeze Industrial Products Corp.



- Designed for use with SAE J844 nylon tubing (see page 42)
- **DOT 49CFR 571.106 compliant**
High strength composite fittings offer weight savings over all brass style fittings-currently being used by many OE vehicle manufacturers
- Fittings meet performance requirements as stated in SAE J1131*
- Operating temperatures from -45° F to +140° F
- Maximum operating pressure 145 psi
- Elbows and male branch fittings with built-in swivel for positioning
- Engineered tube retention system and seal design for superior holding and side load retention capabilities
- Positive release bushing for easy insertion and removal of tubing
- Thread sealant applied to all male pipe threads to reduce installation time and expense

WARNING

Velvac's line of push-lock brake fittings and tubing are designed only for use in vehicles where air is utilized as the operating fluid. As such, Velvac's push-lock air brake fittings should only be used in a manner consistent with the manufacturer's specifications.

Using Velvac's push-lock fittings or tubing improperly or in a manner inconsistent with the manufacturer's specifications may result in serious injury or property damage. For example, Velvac's push-lock fittings and tubing are not intended for use in environments exceeding 145 psi and temperatures between -45° and +140° F. Velvac push-lock fittings and tubing are intended for use only as defined in 49CFR571.106.

Further, the U.S. Department of Transportation prohibits the use of push-lock fittings and nylon tubing as a connection between (I) a semi-tractor & trailer, or (II) a drive shaft and chassis.

NOTE: 1/8" push-lock fittings DO NOT meet DOT or SAE specifications for air brake applications.

45° Male Swivel Elbows

(Sealant Applied)

NEW



- Composite body with brass pipe fitting end

Part No.	Tube Size	Pipe Size
016412*	1/8"	1/8"
016442	1/4"	1/8"
016444	1/4"	1/4"
016446	1/4"	3/8"
016464	3/8"	1/4"
016466	3/8"	3/8"
016486	1/2"	3/8"
016947	3/8"	1/2"
016950	1/2"	1/2"

Full Unions

NEW



- Composite body

Part No.	Tube Size
016610*	1/8"
016620	5/32"
016630*	3/16"
016640	1/4"
016660	3/8"
016680	1/2"
016670	5/8"

90° Male Swivel Elbows

(Sealant Applied)

NEW



- Composite body with brass pipe fitting end

Part No.	Tube Size	Pipe Size
016212	1/8"	1/8"
016214	1/8"	1/4"
016222	5/32"	1/8"
016224	5/32"	1/4"
016242	1/4"	1/8"
016244	1/4"	1/4"
016246	1/4"	3/8"
016262	3/8"	1/8"
016264	3/8"	1/4"
016266	3/8"	3/8"
016268	3/8"	1/2"
016284	1/2"	1/4"
016286	1/2"	3/8"
016288	1/2"	1/2"
016276	3/4"	1/2"
016277	3/4"	3/4"
016278	5/8"	3/4"
016279	5/8"	3/8"
016281	5/8"	1/2"

Bulkhead Unions



- Brass Construction

Part No.	Tube Size
016810*	1/8"
016840	1/4"
016860	3/8"
016880	1/2"

* Indicates parts that do not meet DOT or SAE specification for air brake applications

Union "Y"

NEW



- Composite body

Part No.	Description
016289	1/4 x 1/4 x 1/4
016291	1/4 x 1/4 x 3/8
016290	3/8 x 3/8 x 3/8

Union Tees

NEW



- Composite body

Part No.	Tube Size
016910	1/8"
016920	5/32"
016930	3/16"
016940	1/4"
016960	3/8"
016980	1/2"
016985	1/2 x 1/2 x 3/8

Male Run Tee

NEW



Part No.	Tube Size	Pipe Size
016400	1/4"	1/8"
016401	1/4"	1/4"
016402	3/8"	1/4"
016403	3/8"	3/8"
016404	3/8"	1/2"
016405	1/2"	3/8"
016406	1/2"	1/2"
016407	5/8"	1/2"
016409	1/4"	3/8"

Female Bulkhead Connector

NEW



Part No.	Tube Size	Thread Size
016812	1/4"	1/4"
016813	3/8"	1/4"

Male Connectors (Sealant Applied)

NEW



- Brass Construction

Part No.	Tube Size	Pipe Size
016110*	1/8"	1/16"
016112*	1/8"	1/8"
016114*	1/8"	1/4"
016120	5/32"	1/16"
016122	5/32"	1/8"
016124	5/32"	1/4"
016142	1/4"	1/8"
016144	1/4"	1/4"
016146	1/4"	3/8"
016162	3/8"	1/8"
016164	3/8"	1/4"
016166	3/8"	3/8"
016168	3/8"	1/2"
016184	1/2"	1/4"
016186	1/2"	3/8"
016188	1/2"	1/2"
016151	3/4"	1/2"
016161	3/4"	3/4"
016163	5/8"	3/8"
016189	5/8"	1/2"
016187	3/4"	3/8"

*Except 1/8" fittings and 90° male elbow Part No. 016224 which do not meet DOT or SAE specifications for air brake applications

Female Elbow

NEW



Part No.	Tube	Thread
016247	1/4"	1/8"
016248	1/4"	1/4"
016249	3/8"	1/4"

Union 90° Elbow

NEW



Part No.	Tube Size
016282	5/32"
016283	1/4"
016285	3/8"
016287	1/2"

- Composite body

Male Branch Swivel Tees

(Sealant Applied)

NEW



- Composite body with brass pipe fitting end

Part No.	Tube Size	Pipe Size
016312*	1/8"	1/8"
016314*	1/8"	1/4"
016342	1/4"	1/8"
016344	1/4"	1/4"
016364	3/8"	1/4"
016366	3/8"	3/8"
016368	3/8"	1/2"
016386	1/2"	3/8"
016388	1/2"	1/2"
016408	5/8"	1/2"

* Indicates parts that do not meet DOT or SAE specification for air brake applications

- Designed for use with nylon air brake tubing (see page 42)
- **DOT compliant.** Fittings meet SAE J246 requirements
- Brass construction with internal stainless steel tube supports
- Pipe thread sealant featured on several fitting styles. This pre-applied sealant offers several benefits
 - Provides no-leak assembly instantly. Saves application time and expense
 - Will not contaminate systems like tape shredding or liquid sealant washout
 - Can be reused up to five times
 - Provides excellent thread

45° Elbows *(Sealant Applied)*



Part No.	Tube Size	Pipe Size
017842	1/4"	1/8"
017844	1/4"	1/4"
017862	3/8"	1/8"
017864	3/8"	1/4"
017866	3/8"	3/8"
017868	3/8"	1/2"
017886	1/2"	3/8"
017888	1/2"	1/2"
017816	5/8"	3/8"
017808	5/8"	1/2"

Tee Thread Branches

(Sealant Applied)



Part No.	Tube Size	Pipe Size
017242	1/4"	1/8"
017244	1/4"	1/4"
017262	3/8"	1/8"
017264	3/8"	1/4"
017266	3/8"	3/8"
017286	1/2"	3/8"
017288	1/2"	1/2"
017218	5/8"	1/2"

Female Elbows



Part No.	Tube Size	Pipe Size
017043	1/4"	1/8"
017046	1/4"	1/4"
017060	3/8"	1/8"
017064	3/8"	1/4"
017066	3/8"	3/8"
017086	1/2"	3/8"
017088	1/2"	1/2"

Sleeves



Part No.	Tube Size
016340	1/4"
016360	3/8"
016380	1/2"
016300	5/8"
016301	3/4"

NOTE: Fitting sleeves should NEVER be reused

Full Union



Part No.	Tube Size
016240	1/4"
016260	3/8"
016280	1/2"
016200	5/8"
016201	3/4"

Elbow Ends Tubes



Part No.	Tube Size
016540	1/4"
016560	3/8"
016580	1/2"
016510	5/8"

Tee Ends Tubes



Part No.	Tube Size
016440	1/4"
016460	3/8"
016480	1/2"

Female Connectors



Part No.	Tube Size	Pipe Size
016642	1/4"	1/8"
016644	1/4"	1/4"
016662	3/8"	1/8"
016664	3/8"	1/4"
016666	3/8"	3/8"
016686	1/2"	3/8"
016688	1/2"	1/2"
016616	5/8"	3/8"
016618	5/8"	1/2"

Male Elbows *(Sealant Applied)*



Part No.	Tube Size	Pipe Size
016942	1/4"	1/8"
016944	1/4"	1/4"
016946	1/4"	3/8"
016962	3/8"	1/8"
016964	3/8"	1/4"
016966	3/8"	3/8"
016968	3/8"	1/2"
016984	1/2"	1/4"
016986	1/2"	3/8"
016988	1/2"	1/2"
016916	5/8"	3/8"
016908	5/8"	1/2"
016918	3/4"	1/2"
016922	3/4"	3/4"

Nuts



Part No.	Tube Size
016140	1/4"
016160	3/8"
016180	1/2"
016100	5/8"
016101	3/4"

Bulkhead Unions



Part No.	Tube Size
016204	1/4"
016206	3/8"
016208	1/2"

Tee Thread Runs

(Sealant Applied)



Part No.	Tube Size	Pipe Size
017142	1/4"	1/8"
017144	1/4"	1/4"
017164	3/8"	1/4"
017166	3/8"	3/8"
017186	1/2"	3/8"
017188	1/2"	1/2"
017118	5/8"	1/2"

Male Connectors (Sealant Applied)



HELPFUL HINT

Refer to page 41 for Air Brake Hose Repair Fitting Kits 500007 and 500008

Part No.	Tube Size	Pipe Size
016842	1/4"	1/8"
016844	1/4"	1/4"
016846	1/4"	3/8"
016862	3/8"	1/8"
016864	3/8"	1/4"
016866	3/8"	3/8"
016868	3/8"	1/2"
016884	1/2"	1/4"
016886	1/2"	3/8"
016888	1/2"	1/2"
016806	5/8"	3/8"
016808	5/8"	1/2"
016818	3/4"	1/2"
016811	3/4"	3/4"

AIR BRAKE COMPRESSION FITTINGS

- Designed for use with nylon or copper air brake tubing (see page 42)
- **DOT compliant.** Fittings meet SAE J246 requirements
- All Brass Construction
- Pipe thread sealant featured on several fitting styles. This pre-applied sealant offers several benefits:
 - Provides no-leak assembly instantly. Saves application time and expense
 - Will not contaminate systems like tape shredding or liquid sealant
 - Can be reused up to five times
 - Provides excellent thread lubrication to prevent galling

45° Male Elbows

(Sealant Applied)



Part No.	Tube Size	Pipe Size
013075	3/8"	1/4"
013077	1/2"	3/8"

Female Connectors



Part No.	Tube Size	Pipe Size
011085	1/4"	1/4"
011091	3/8"	1/8"
011093	3/8"	1/4"

Male Connector (Sealant Applied)



Part No.	Tube Size	Pipe Size
012017	1/4"	1/8"
012021	1/4"	1/4"
012023	1/4"	3/8"
012035	3/8"	1/8"
012037	3/8"	1/4"
012041	3/8"	3/8"
012043	3/8"	1/2"
012045	1/2"	1/4"
012047	1/2"	3/8"
012049	1/2"	1/2"
012053	5/8"	3/8"
012055	5/8"	1/2"
012061	3/4"	1/2"

Tee Thread Branches



Part No.	Tube Size
011051	1/4"
011059	3/8"
011025	1/2"

Tee Thread Run

(Sealant Applied)



Part No.	Tube Size	Pipe Size
013041	3/8"	1/4"

Spherical Sleeves



Part No.	Tube Size
011001	1/4"
011003	3/8"
011005	1/2"
011007	5/8"
011009	3/4"

Elbow Ends Tube



Part No.	Tube Size
011073	3/8"

Tee Thread Branches

Sealant Applied)



Part No.	Tube Size	Pipe Size
013049	1/4"	1/8"
013057	3/8"	1/4"

NOTE: Fitting sleeves should NEVER be reused

Male Elbows

(Sealant Applied)



Part No.	Tube Size	Pipe Size
012067	1/4"	1/8"
012071	1/4"	1/4"
012073	1/4"	3/8"
012087	3/8"	1/8"
012091	3/8"	1/4"
012093	3/8"	3/8"
012095	3/8"	1/2"
012097	1/2"	1/4"
013001	1/2"	3/8"
013003	1/2"	1/2"
013011	5/8"	1/2"

Female Elbows



Part No.	Tube Size	Pipe Size
013026	1/4"	1/4"
013027	3/8"	1/4"

Compression Nuts



Part No.	Tube Size
011013	1/4"
011023	3/8"
011025	1/2"
011027	5/8"
011029	3/4"

NOTE: Tubing size stamped on each nut for easy identification

Full Unions



Part No.	Tube Size
011033	1/4"
011041	3/8"
011043	1/2"
011045	5/8"
011047	3/4"

Nylon Tubing Inserts



Part No.	Tube Size
010087	1/4"
010089	3/8"
010094	1/2"
010096	5/8"
010098	3/4"

REUSABLE AIR HOSE FITTINGS

- Designed for use with rubber air brake hose (see page 40)
- Bodies, sleeves and nuts are all brass construction for durability and corrosion resistance
- Zinc-plated steel springs have rounded ends to protect air hose

Nuts with & without Spring



NEW

Part No.	Description	Hose I.D.
500021	Spring & Nut	3/8"
500071	Spring & Nut	1/2"
500037	Nut Only	1/2"
500022	Nut Only	3/8"
500030	Spring Only	1/2"
500024	Spring Only	3/8"

Fitting Assemblies



Part No.	Hose I.D.	Pipe Size
500001	3/8"	1/2"
500009	3/8"	3/8"
500015	3/8"	1/4"
500050	1/2"	1/2"
500051	1/2"	3/8"

Fitting Bodies



Part No.	Hose I.D.	Pipe Size
500003	3/8"	1/2"
500011	3/8"	3/8"
500017	3/8"	1/4"
500053	1/2"	1/2"
500061	1/2"	3/8"

Swivel Fitting Assemblies with Spring



Part No.	Hose I.D.	Pipe Size
500035	3/8"	1/4"
500042	3/8"	3/8"

Union Assemblies



Part No.	Hose I.D.
500031	3/8"
500088	1/2"

Swivel Body Adapters



Part No.	Hose I.D.	Pipe Size	Straight Thread
140000	3/8"	1/4"	3/4"-20
142001	3/8"	3/8"	3/4"-20
500052	1/2"	3/8"	7/8"-20

Swivel Fitting Assemblies



Part No.	Hose I.D.	Pipe Size
500039	3/8"	1/4"
500046	3/8"	3/8"
500094	1/2"	3/8"

Fitting Sleeves



Part No.	Hose I.D.
500005	3/8"
500055	1/2"

NOTE: Fitting sleeves should NEVER be reused

Fitting Assemblies with Spring



Part No.	Hose I.D.	Pipe Size
500019	3/8"	1/2"
500025	3/8"	3/8"
500027	3/8"	1/4"
500070	1/2"	1/2"
500078	1/2"	3/8"

Nuts



Part No.	Hose I.D.
500004	3/8"
500054	1/2"

Dual Barb Male Fitting

NEW



Part No.	Hose Size	Tube Size
500079	1/4"	1/8"
500080	1/4"	1/4"
500081	5/16"	1/4"
500082	3/8"	1/4"
500083	3/8"	3/8"
500084	5/8"	1/2"
500085	3/4"	3/4"

Hose Splicer

NEW



Part No.	Hose Size
500062	1/8"
500063	3/8"
500064	1/2"
500065	5/8"
500066	3/4"

COUPLINGS

Frame Couplings



- Zinc-plated steel construction
- FPT both ends

Part No.	Description	Overall Length	Mounting Thread
035081	1/4" Frame Coupling	1-1/2"	3/4" - 16
035087	3/8" Frame Coupling	1-3/8"	1" - 14

Firewall Coupling



- Zinc-plated steel construction
- 1/4" FPT both ends
- 3/16" diameter mounting holes on 1-3/8" centers

Part No.	Description
501071	Firewall Coupling

CLAMPING STUDS

Male Clamping Stud



- Zinc-plated steel construction
- 1/2" MPT each end, 1/4" FPT one end
- 1" - 14 mounting thread
- 2-3/8" overall length

Part No.	Description
035021	Male Clamping Stud

Female Clamping Stud



- Zinc-plated steel construction
- 1/2" MPT, 1/4" FPT one end and 1/2" FPT other end
- 1"-14 mounting thread
- 2- 1/4" overall length

Part No.	Description
035029	Female Clamping Stud

Frame Clamping Stud



- Zinc-plated steel construction
- 1/2" MPT one end, 3/8" FPT one end
- 1" - 14 mounting thread
- 1-7/8" overall length

Part No.	Description
035079	Frame Clamping Stud

Bulkhead Fitting - Female to Nylon Tubing



- 3/8" NPTF thread

NEW

Part No.	Tube Size
017098	1/2"
017099	3/8"

DISCHARGE HOSE FITTINGS

- Designed for use with stainless steel braded discharge hose (see page 41)
- All brass bodies with brass sleeves and steel nuts

Straight Tubes



Part No.	Hose O.D.
142102	5/8"
142103	3/4"

Male Pipe Fitting



Part No.	Hose O.D.	Pipe Thread
142101	5/8"	1/2" - 14

Female Swivel Fittings



Part No.	Hose O.D.	Female Thread
142110	5/8"	7/8" - 14
142111	3/4"	1-1/16" - 14

Compression Fittings



Part No.	Hose O.D.	Male Thread
142106	5/8"	13/16" - 18
142107	3/4"	1" - 18

Fitting Sleeves



5/8" Hose O.D.	3/4" Hose O.D.	Description
Part No.	Part No.	
142104	142105	Sleeve
142108	142109	Nut

NOTE: Fitting sleeves should NEVER be reused

FULLER TRANSMISSION COMPRESSION FITTINGS

- Designed for use with polyethylene nylon and plastic tubing **NOT FOR AIR BRAKE USE**
- All brass construction

Insert



Part No.	Tube Size
010085	3/16"

NOTE: Nylon tubing inserts are required when using 3/16" tubing

Nuts

Part No.	Tube Size
011012	1/8"
011014	3/16"
011016	5/32"



Full Unions



Part No.	Tube Size
011032	1/8"
011034	5/32"

Male Elbows



Part No.	Tube Size	Pipe Size
012064	5/32"	1/8"
012066	1/8"	1/8"
012068	3/16"	1/8"

Male Connectors



Part No.	Tube Size	Pipe Size
012016	1/8"	1/16"
012015	3/16"	1/8"
012012	5/32"	1/16"
012014	5/32"	1/8"
012022	1/8"	1/8"

Slotted Collets



Part No.	Tube Size
011000	1/8"
011020	5/32"

Sleeve

Part No.	Tube Size
010093	3/16"

NOTE: Fitting sleeves should NEVER be reused



VACUUM HOSE FITTINGS

Elbows

- All brass construction



Part No.	Hose I.D.	Pipe Size
175033	1/2"	3/8"

Nipples



Part No.	Hose I.D.	Pipe Size
149005	1/2"	1/2"
149006	3/4"	1/2"

- Designed for low and medium pressure applications

Square Head Plugs



Part No.	Pipe Size	Material
017061	1/8"	Plated Steel
017063	1/4"	Plated Steel
017065	3/8"	Plated Steel
017067	1/2"	Plated Steel
017069	3/4"	Plated Steel
017059	3/4"	Brass

Close Nipples



Part No.	Pipe Size	Material
016051	1/8"	Brass
016052	1/4"	Brass
016053	3/8"	Brass
016054	1/2"	Brass
016065	3/4"	Malleable Iron

Cap - Female Pipe fittings



Part No.	Pipe Size
017223	1/8"
017224	1/4"
017225	3/8"
017226	1/2"
017227	3/4"

Hex Nipples



Part No.	Pipe Size	Material
018009	1/8"	Brass
018010	1/4"	Brass
018011	3/8"	Brass
018012	1/2"	Brass
018023	3/4"	Plated Steel

Pipe Elbows



Part No.	Pipe Size	Material
017003	1/8"	Brass
017004	1/4"	Brass
017005	3/8"	Brass
017006	1/2"	Brass
017013	3/4"	Malleable Iron

45° Street Elbows



Part No.	Pipe Size	Material
017023	1/8"	Brass
017025	1/4"	Brass
017027	3/8"	Brass
017029	1/2"	Brass

Street Tees



Part No.	Pipe Size	Material
017091	1/8"	Brass
017093	1/4"	Malleable Iron
017095	3/8"	Malleable Iron
017096	1/2"	Malleable Iron

Pipe Nipples



Part No.	Pipe		Material
	Size	Length	
016021	1/8"	1-1/2"	Brass
016025	1/4"	1-1/2"	Brass
016029	3/8"	1-1/2"	Brass
016033	1/2"	1-1/2"	Brass
016037	1/8"	2"	Malleable Iron
016038	1/4"	2"	Malleable Iron
016039	3/8"	2"	Malleable Iron
016040	1/2"	2"	Malleable Iron
016041	1/2"	3"	Malleable Iron
016042	3/4"	2"	Malleable Iron
016043	3/4"	3"	Malleable Iron

Reducer Couplings



Part No.	Pipe Size	Material
017081	1/4" x 1/8"	Brass
017083	3/8" x 1/4"	Brass
017085	1/2" x 3/8"	Brass

Pipe Tees



Part No.	Pipe Size	Material
016001	1/8"	Brass
016002	1/4"	Brass
016003	3/8"	Brass
016004	1/2"	Brass

Reducer Bushings



Part No.	Pipe Size	Material
016079	1/4" x 1/8"	Brass
016080	3/8" x 1/8"	Brass
016081	3/8" x 1/4"	Brass
016082	1/2" x 1/8"	Brass
016083	1/2" x 1/4"	Brass
016084	1/2" x 3/8"	Brass
016085	3/4" x 1/4"	Brass
016086	3/4" x 3/8"	Brass
016087	3/4" x 1/2"	Brass
017000	1" x 3/4"	Malleable Iron

Reducer Hex Nipples



Part No.	Pipe Size	Material
018013	1/4" x 1/8"	Brass
018025	3/8" x 1/4"	Plated Steel
018027	1/2" x 3/8"	Plated Steel
018029	3/4" x 1/2"	Plated Steel

Street Elbows



Part No.	Pipe Size	Material
017015	1/8"	Brass
017017	1/4"	Brass
017019	3/8"	Brass
017021	1/2"	Brass

Hex Head Plugs



Part No.	Pipe Size	Material
017051	1/8"	Brass
017053	1/4"	Brass
017055	3/8"	Brass
017057	1/2"	Brass

Pipe Cross



Part No.	Pipe Size	Material
017073	1/8"	Brass

Couplings



Part No.	Pipe Size	Material
016067	1/8"	Brass
016068	1/4"	Brass
016069	3/8"	Brass
016070	1/2"	Brass
016077	3/4"	Malleable Iron

Adapters



Part No.	Pipe Size	Material
018006	1/4" x 1/8"	Brass
018007	3/8" x 1/4"	Brass
018008	1/2" x 3/8"	Brass

SAE 45° FLARE FITTINGS

- Designed for use with flareable copper, brass, aluminum and welded steel hydraulic tubing
- All Brass construction
- UL compliant for flammable liquid and gas
- Fittings meet SAE J246 requirements

Long Nuts



Part No	Tube Size	Straight Thread
014103	3/16"	3/8"-24
014104	1/4"	7/16"-20
014105	5/16"	1/2"-20
014106	3/8"	5/8"-18
014108	1/2"	3/4"-16
014100	5/8"	7/8"-14

Unions



Part No	Tube Size	Straight Thread
014203	3/16"	3/8"-24
014204	1/4"	7/16"-20
014205	5/16"	1/2"-20
014206	3/8"	5/8"-18
014208	1/2"	3/4"-16
014200	5/8"	7/8"-14

45° Elbows



Part No	Tube Size	Pipe Size	Straight Thread
015942	1/4"	1/8"	7/16"-20
015944	1/4"	1/4"	7/16"-20
015964	3/8"	1/4"	5/8"-18
015966	3/8"	3/8"	5/8"-18
015986	1/2"	3/8"	3/4"-16
015988	1/2"	1/2"	3/4"-16
015906	5/8"	3/8"	7/8"-14
015908	5/8"	1/2"	7/8"-14
015918	3/4"	1/2"	1-1/16"-14

Union Tees



Part No	Tube Size	Straight Thread
014408	1/2"	3/4"-16
014400	5/8"	7/8"-14

Hose Barb to Female Flare Swivel



NEW

Part. No.	Hose Size	Tube Size
016945	3/8"	3/8"
016948	1/4"	1/4"

Male Connectors



Part No	Tube Size	Pipe Size	Straight Thread
014822	1/8"	1/8"	5/16"-24
014832	3/16"	1/8"	3/8"-24
014842	1/4"	1/8"	7/16"-20
014844	1/4"	1/4"	7/16"-20
014852	5/16"	1/8"	1/2"-20
014854	5/16"	1/4"	1/2"-20

Part No	Tube Size	Pipe Size	Straight Thread
014862	3/8"	1/8"	5/8"-18
014864	3/8"	1/4"	5/8"-18
014866	3/8"	3/8"	5/8"-18
014868	3/8"	1/2"	5/8"-18
014884	1/2"	1/4"	3/4"-16
014886	1/2"	3/8"	3/4"-16

Part No	Tube Size	Pipe Size	Straight Thread
014888	1/2"	1/2"	3/4"-16
014806	5/8"	3/8"	7/8"-14
014808	5/8"	1/2"	7/8"-14
014818	3/4"	1/2"	1-1/16"-14
014811	3/4"	3/4"	1-1/16"-14

Male Elbows



Part No	Tube Size	Pipe Size	Straight Thread	Part No	Tube Size	Pipe Size	Straight Thread	Part No	Tube Size	Pipe Size	Straight Thread
014932	3/16"	1/8"	3/8"-24	014962	3/8"	1/8"	5/8"-18	014988	1/2"	1/2"	3/4"-16
014942	1/4"	1/8"	7/16"-20	014964	3/8"	1/4"	5/8"-18	014906	5/8"	3/8"	7/8"-14
014944	1/4"	1/4"	7/16"-20	014966	3/8"	3/8"	5/8"-18	014908	5/8"	1/2"	7/8"-14
014946	1/4"	3/8"	7/16"-20	014968	3/8"	1/2"	5/8"-18	014901	5/8"	3/4"	7/8"-14
014952	5/16"	1/8"	1/2"-20	014984	1/2"	1/4"	3/4"-16	014918	3/4"	1/2"	1-1/16"-14
014954	5/16"	1/4"	1/2"-20	014986	1/2"	3/8"	3/4"-16	014911	3/4"	3/4"	1-1/16"-14

INVERTED FLARE FITTINGS

- Designed for use with flareable copper, brass, aluminum and welded steel hydraulic tubing
- All brass construction (unless otherwise noted)
- UL compliant for flammable liquid and gas
- Fittings meet SAE J246 requirements
- DOT Compliant

Nuts



Part No.	Tube Size	Straight Thread	Material
006103	3/16"	3/8"-24	Brass
006104	1/4"	7/16"-24	Brass
006105	5/16"	1/2"-20	Brass
006106	3/8"	5/8"-18	Brass
006108	1/2"	3/4"-18	Brass
006303	3/16"	3/8"-24	Plated Steel
006304	1/4"	7/16"-24	Plated Steel
006314*	1/4"	7/16"-24	Plated Steel
006305	5/16"	1/2"-24	Plated Steel
006306	3/8"	5/8"-18	Plated Steel

*006314 - Straight Thread is 7/16"-24 UNS-2A

Male Elbows



Part No.	Tube Size	Pipe Size	Straight Thread
006932	3/16"	1/8"	3/8"-24
006942	1/4"	1/8"	7/16"-24
006944	1/4"	1/4"	7/16"-24
006952	5/16"	1/8"	1/2"-20
006954	5/16"	1/4"	1/2"-20
006962	3/8"	1/8"	5/8"-18
006964	3/8"	1/4"	5/8"-18
006966	3/8"	3/8"	5/8"-18
006986	1/2"	3/8"	3/4"-18
006908	5/8"	1/2"	7/8"-14

Male Connectors



Part No.	Tube Size	Pipe Size	Straight Thread
006842	1/4"	1/8"	7/16"-24
006852	5/16"	1/8"	1/2"-20
006854	5/16"	1/4"	1/2"-20
006864	3/8"	1/4"	5/8"-18
006866	3/8"	3/8"	5/8"-18
006886	1/2"	3/8"	3/4"-16

Female Connectors



Part No.	Tube Size	Pipe Size	Straight Thread
006642	1/4"	1/8"	7/16"-24
006652	5/16"	1/8"	1/2"-20
006664	3/8"	1/4"	5/8"-18

Unions



Part No.	Tube Size	Straight Thread
006202	1/8"	5/16"-28
006203	3/16"	3/8"-24
006204	1/4"	7/16"-24
006205	5/16"	1/2"-20
006206	3/8"	5/8"-18
006208	1/2"	3/4"-18



Part No	Description
690031	In-Cab Air Line Repair Kit - Push Lock
690033	Air Brake Line Repair Kit - Push Lock
690035	Nylon Tubing Repair Kit - Push Lock
690037	Transmission Air Line Repair Kit -Push Lock
690050	NTA Fitting Kit

IN-CAB AIR LINE REPAIR KIT					
Part No 690031			24 Total Fittings		
016112 1/8 x 1/8 m. conn 2 pcs.	016114 1/8 x 1/4 m. conn 2 pcs.	016142 1/4 x 1/8 m. conn 2 pcs.	016144 1/4 x 1/4 m. conn 2 pcs.	016162 3/8 x 1/8 m. conn 1 pc.	016164 3/8 x 1/4 m. conn 1 pc.
016242 1/4 x 1/8 elbow 1 pc.	016244 1/4 x 1/4 elbow 1 pc.	016264 3/8 x 1/4 elbow 1 pc.	016910 1/8 tee 1 pc.	016930 3/16 tee 1 pc.	016940 1/4 tee 1 pc.
016610 1/8 union 2 pcs.	016630 3/16 union 2 pcs.	016640 1/4 union 2 pcs.	016660 3/8 union 1 pc.	016960 3/8 tee 1 pc.	OPEN

AIR BRAKE LINE REPAIR KIT					
Part No 690031			24 Total Fittings		
016166 3/8 x 3/8 m. conn 2 pcs.	016168 3/8 x 1/2 m. conn 1 pc.	016184 1/2 x 1/4 m. conn 1 pc.	016268 3/8 x 1/2 m. conn 1 pc.	016284 1/2 x 1/4 m. conn 1 pc.	016286 1/2 x 3/8 m. conn 1 pc.
016186 1/2 x 3/8 m. conn 2 pcs.	016188 1/2 x 1/2 m. conn 1 pc.	OPEN	016288 1/2 x 1/2 elbow 1 pc.	016960 3/8 tee 2 pcs.	016980 1/2 tee 2 pcs.
016660 3/8 union 2 pcs.	016680 1/2 union 2 pcs.	016266 3/8 x 3/8 elbow 2 pcs.			

NYLON TUBING REPAIR KIT					
Part No. 690035					
2 ft. section of each:			2 pcs. of each:		
020132	1/8" nylon tubing	Blue	016610	1/8" union	
020065	5/32" nylon tubing	Black	016620	5/32" union	
020066	3/16" nylon tubing	Black	016630	3/16" union	
020164	1/4" nylon tubing	Yellow	016640	1/4" union	
020156	3/8" nylon tubing	Red	016660	3/8" union	
020168	1/2" nylon tubing	Yellow	016680	1/2" union	
090014	7" nylon tie straps, 12 pcs.				
090028	nylon tube cutter, 1 pc.				

TRANSMISSION AIR LINE REPAIR KIT					
Part No 690037			11 Total Fittings		
016112 1/8 x 1/8 m. conn 1 pc.	016120 5/32 X 1/16 m. conn 2 pcs.	016122 5/32x1/8 m. conn 2 pcs.	016212 1/8 x 1/8 m. conn 1 pc.	016222 5/32x1/8 m. conn 1 pc.	090028 Nylon Tube Cutter
OPEN	OPEN	OPEN	OPEN	OPEN	OPEN
016610 1/8 union 1 pc.	016620 5/32 union 1 pc.	016630 3/16 union 1 pc.			

NYLON AIR BRAKE TUBE FITTING KIT					
Part No 690050			33 Total Fittings		
016842 1/4 x 1/8 m. conn 2 pcs.	016844 1/4 x 1/4 m. conn 3 pcs.	016240 1/4 full union 2 pcs.	016260 3/8 full union 2 pcs.	016280 1/2 full union 2 pcs.	016200 5/8 full union 2 pcs.
016864 3/8 x 1/4 m. conn 2 pcs.	016866 3/8 x 3/8 m. conn 1 pc.	016886 1/2 x 3/8 m. conn 1 pc.	016966 3/8 x 3/8 m. elbow 3 pcs.	016986 1/2 x 3/8 m. elbow 2 pcs.	016988 1/2 x 1/2 m. elbow 2 pcs.
016942 1/4 x 1/8 m. elbow 2 pcs.	016944 1/4 x 1/4 m. elbow 3 pcs.	016964 3/8 x 3/8 m. elbow 2 pcs.			

FITTINGS

Large Air Brake Fitting Assortment

Assortment includes the following part numbers and quantities plus rack part number 690090, P. 139

Part No.	Total Fittings
690059	583

Part No.	Qty.	Part No.	Qty.
010087	50	012021	10
010089	50	012035	5
010094	25	012037	20
010096	25	012041	10
010098	25	012043	5
011001	25	012045	10
011003	50	012047	10
011005	25	012049	5
011007	10	012053	3
011009	10	012055	3
011013	25	012067	10
011023	15	012071	10
011025	5	012087	5
011027	3	012091	20
011029	3	012093	5
011033	10	012095	5
011041	15	012097	5
011043	10	013001	10
011045	3	013003	5
011047	2	013011	3
011057	5	013041	5
011059	3	013057	5
011073	5	013075	5
012017	10	690090	1

Push-Lock Fitting Assortment

Assortment includes the following part numbers and quantities plus rack part number 690090, P. 139

Part No.	Total Fittings
690072	155

Part No.	Qty.	Part No.	Qty.
016112	5	016266	5
016114	5	016268	5
016120	5	016284	5
016122	5	016286	5
016142	5	016288	5
016144	5	016610	5
016162	5	016620	5
016164	5	016630	5
016166	5	016640	5
016168	5	016660	5
016184	5	016680	5
016186	5	016930	5
016188	5	016940	5
016242	5	016960	5
016244	5	016980	5
016264	5	690090	1

Nylon Air Brake Tube Fitting Assortment

Assortment includes the following part numbers and quantities plus rack part number 690090, P. 139

Part No.	Total Fittings
690071	304

Part No.	Qty.	Part No.	Qty.
016100	3	016866	5
016101	3	016884	5
016140	25	016886	5
016160	10	016888	5
016180	5	016908	3
016200	3	016916	5
016201	2	016918	2
016240	10	016922	5
016260	5	016942	10
016280	5	016944	10
016300	10	016962	5
016301	10	016964	5
016340	25	016966	5
016360	25	016968	5
016380	25	016984	5
016808	3	016986	5
016818	2	016988	5
016842	10	017264	5
016844	10	017266	5
016862	5	017286	3
016864	5	690090	1

Brass Pipe Fitting Assortment

Assortment includes the following part numbers and quantities plus rack part number 690090, P. 139

Part No.	Total Fittings
690064	340

Part No.	Qty.	Part No.	Qty.	Part No.	Qty.	Part No.	Qty.
016001	5	016069	5	017019	5	018006	10
016002	5	016070	5	017021	5	018007	10
016003	5	016079	10	017023	5	018008	10
016004	5	016080	10	017025	5	018009	10
016051	10	016081	30	017027	5	018010	20
016052	20	016083	5	017029	5	018011	10
016053	20	016084	5	017051	10	018012	5
016054	5	016087	5	017053	20	690090	1
016067	10	017015	5	017055	20		
016068	10	017017	5	017057	5		

See Pages
111 - 120
for fitting photos
and descriptions

Miniature/General Purpose Slotted/Liner/EuroSeal® Clamps



Miniature clamps ideal for use on air and fuel lines



General purpose slotted clamps meet applicable SAE J1508 requirements



Liner clamps designed with inner liner to protect silicone hose from extruding through band slots; unique construction allows more tightening torque to be delivered to the perforations while maximizing vibration resistance



Euro-Seal® clamps with embossed threads and rounded band edge to help eliminate hose abrasion and damage. Clamps meet or exceed international clamp specifications for material, corrosion resistance, sizing and torque.

- All clamps feature 300 series stainless steel bands
- Miniature, general purpose and liner clamps include yellow dichromate slotted hex head screws. Euro-Seal® clamps feature 300 series stainless steel screws

Miniature Clamps	General Purpose Slotted Clamps	Liner Clamps	Euro-Seal® Clamps	SAE Size	Clamping Range (in.)
022204	—	—	—	4	7/32 - 5/8
022206	022306	022106	022506	6	7/16 - 25/32
—	022308	022108	022508	8	1/2 - 29/32
—	022310	022110	022510	10	9/16 - 1-1/16
—	022312	022112	022512	12	11/16 - 1-1/4
—	022316	022116	022516	16	13/16 - 1-1/2
—	022320	022120	022520	20	13/16 - 1-3/4
—	022324	022124	022524	24	1-1/16 - 2
—	022328	022128	022528	28	1-5/16 - 2-1/4
—	022332	022132	022532	32	1-9/16 - 2-1/2
—	022336	022136	022536	36	1-13/16 - 2-3/4
—	022340	022140	022540	40	2-1/16 - 3
—	022344	022144	022544	44	2-5/16 - 3-1/4
—	022348	022148	022548	48	2-9/16 - 3-1/2
—	022352	—	022552	52	2-13/16 - 3-3/4
—	022356	—	022556	56	3-1/16 - 4
—	022360	—	—	60	3-5/16 - 4-1/4
—	022364	—	022564	64	3-9/16 - 4-1/2
—	022372*	—	022572	72	4-1/16 - 5
—	022380*	—	022680	80	4-9/16 - 5-1/2
—	022388*	—	022688	88	5-1/16 - 6
—	022396*	—	022696	96	5-9/16 - 6-1/2
—	022404*	—	022574	104	6-1/16 - 7

*These clamps may be made smaller than the clamping range shows in the table. Following are the smallest diameters for each of these clamps in the order shown on the chart: 1-7/8", 2-1/2", 3-1/8", 3-5/8", 4-1/8"

Euro-Seal® is a registered trademark of Breeze Industrial Products

Spring Loaded T-Bolt Clamps



- Eliminates "cold flow hose leaks" by automatically adjusting diameter for hose compression set or expansion/contraction of hose and fittings due to temperature changes
- Recommended for bus, truck and heavy-duty equipment air intake and coolant connectors
- 300 series stainless steel band, floating bridge liner and trunion
- Yellow dichromate-plated steel bolt, spring, washer and 1/2" lock-nut
- Clamps meet applicable SAE J1508 requirements

Part No.	Clamping Range (mm)	Clamping Range (in.)
022580	57-65	2-1/4 - 2-9/16
022581	67-77	2-3/4 - 3-1/16
022582*	78-86	3-1/16 - 3-3/8
022583	87-95	3-7/16 - 3-3/4
022584*	90-98	3-9/16 - 3-7/8
022585	98-106	3-7/8 - 4-3/16
022626*	103-111	4-1/16 - 4-3/8
022586	106-114	4-3/16 - 4-1/2
022627*	116-124	4-9/16 - 4-7/8

* Designed for change-air cooling applications

T-Bolt Clamps



- Applications include engine air intake, exhaust, hoses, filters and low pressure hydraulic connections
- 300 series stainless steel band, floating bridge liner and trunion
- Yellow dichromate-plated steel bolt and 7/16" locknut
- Clamps meet applicable SAE J1508 requirements

Part No.	Clamping Range (mm)	Clamping Range (in.)
022550	63 - 71	2-1/2 - 2-13/16
022551	67 - 77	2-3/4 - 3-1/16
022587	76 - 84	3 - 3-5/16
022588	83 - 90	3-1/4 - 3-9/16
022589	87 - 98	3-7/16 - 3-7/8
022591	95 - 103	3-3/4 - 4-1/16
022592	108 - 116	4-1/4 - 4-9/16
022593	121 - 128	4-3/4 - 5-1/16
022557	133 - 141	5-1/4 - 5-9/16
022594	146 - 154	5-3/4 - 6-1/16
022596	159 - 166	6-1/4 - 6-9/16
022597	184 - 192	7-1/4 - 7-9/16
022598	216 - 223	8-1/2 - 8-13/16

Flat Band Clamp

NEW



- Manufactured with a stainless steel band for corrosion protection
- Clamp assembly consists of a stainless steel band with one spacer, two bolts and one reaction block pre-attached to band with one spacer and two nuts packaged with the band

Part No.	Size
022059	4"
022060	5"

www.velvac.com

Constant-Torque® Clamps



- Patented Belleville spring design eliminates "cold flow hose leaks" by automatically adjusting diameter for hose compression set or expansion/contraction of hose and fittings due to temperature changes
- Specified by many top fleets for new vehicle installations
- Recommended for bus, truck and heavy-duty equipment air intake and coolant connections
- Extended inner liner covers worm gear slots to protect against extrusions and damage
- All stainless steel construction
- Extended adjustment range permits fewer stocked parts for complete coverage

Part No.	Clamping Range (mm)	Clamping Range (in.)
Torque Rated at 30-70 in./lbs.		
022410	14 - 27	9/16 - 1-1/16
022412	17 - 32	11/16 - 1-1/4
022416	21 - 38	13/16 - 1-1/2
022420	21 - 44	13/16 - 1-3/4
022424	27 - 51	1-1/16 - 2

Part No.	Clamping Range (mm)	Clamping Range (in.)
Torque Rated at 40-125 in./lbs.		
022400	32 - 54	1-1/4 - 2-1/8
022425	45 - 67	1-3/4 - 2-5/8
022430	57 - 79	2-7/4 - 3-1/8
022435	70 - 92	2-3/4 - 3-5/8
022440	83 - 105	3-1/4 - 4-1/8
022445	95 - 118	3-3/4 - 4-5/8
022450	108 - 130	4-1/4 - 5-1/8

NOTE: For proper installation, the Belleville spring washer stacks should be nearly collapsed flat and the screw tip should extend beyond 1/4". Using a torque wrench, tighten to recommended torque range

Constant-Torque® is a registered trademark of Breeze Industrial Products

Muffler Clamps/Saddle Clamps

NEW



- Heavy duty clamp with round 3/8-16
- Zinc plated for corrosion protection
- Complete with grade 2 serrated flange nuts
- Individually packaged

Part No.	Size
022048	1.75
022049	2
022050	2.5
022051	3
022052	3.5
022053	4
022054	4.5
022055	5

Guillotine Style Clamp

NEW

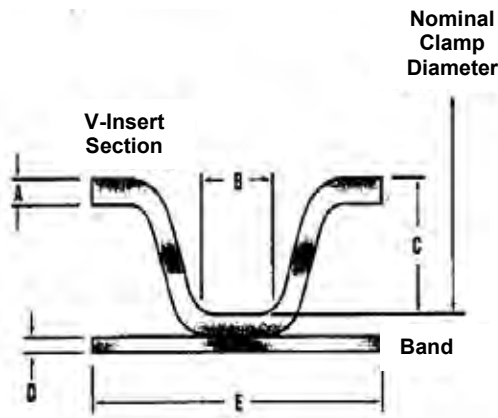
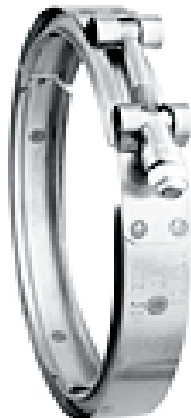


- Heavy-duty guillotine clamps are manufactured with a round 3/8-16 u-bolt and is zinc plated for corrosion protection
- Clamp contains a reinforced rib design for enhanced strength
- Packaged individually in a poly bag
- Complete with grade 2 serrated flange nuts

Part No.	Size
022056	4"
022057	4.5"
022058	5"

Turbo V-Band Clamps

NEW



- Clamps connect vehicle exhaust pipe flange to turbo or engine manifold
- Built to withstand high temperatures produced by heavy-duty engines and turbos
- All stainless steel construction
- Clamps meet or exceed OEM specifications for material and quality standards

Part No.	Nominal (in.)	Clamp Dimensions (in.)					Applications
		A	B	C	D	E	
022470	3.82	.077	.207	.281	.040	.875	CAT, DDC, Ford, GMC, Navistar
022471	3.88	.050	.400	.281	.040	.875	Cummins, Ford, Volvo
022472	4.50	.077	.207	.281	.040	.875	DDC, GMC, Navistar
022473	4.61	.050	.156	.218	.035	.750	Mack, Switzer
022474	4.75	.077	.158	.310	.040	.875	Cummins, CAT, Freightliner, GMC, Navistar, Volvo, Western Star
022475	5.25	.050	.262	.141	.035	.750	DDC, Navistar, Freightliner
022476	5.88	.050	.400	.281	.040	.875	Cummins, DDC, CAT
022477	4.50	.050	.262	.141	.035	.750	Navistar
022478	3.21	.050	.262	.141	.035	.750	Cummins, Freightliner, Blue Bird bus, Ford, Oshkosh

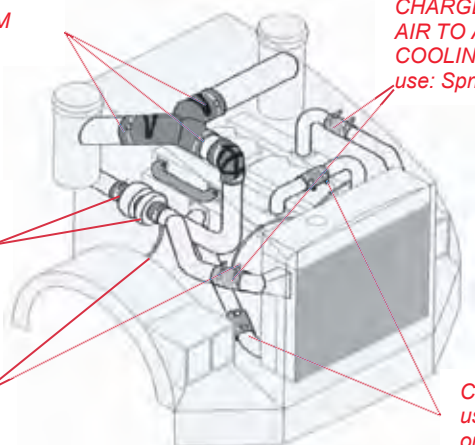
AIR INTAKE SYSTEM

CHARGE AIR COOLING, AIR TO AIR AFTER-COOLING SYSTEM
use: Spring-Loaded T-Bolt

TURBO EXHAUST MANIFOLD
use: V-Band

FUEL LINE
use: Miniature

COOLANT SYSTEM
use: Constant Torque or Hi-Torque



Hi-Torque® Clamps

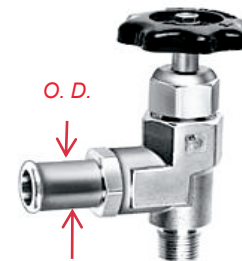


- Heavy gauge housing engineered so eight screw threads are simultaneously engaged to provide over four times the recommended SAE torque requirements of standard worm drive clamps
- All stainless steel construction
- Extended diameter ranges allow coverage from 1-1/4" to 9-1/8" with only four clamps
- Clamps exceed applicable SAE J1508 requirements

Part No.	Clamping Range (mm)	Clamping Range (in.)
	022462	32 - 67
022463	54 - 105	2-1/8 - 4-1/8
022464	102 - 156	4 - 6-1/8
022465	156 - 232	6-1/8 - 9-1/8

Hi-Torque is a registered trademark of Breeze Industrial Products

Coolant Shutoff Valves



- All brass construction

Part No.	O.D.	Pipe Size
023066	3/8"	3/8"
023106	5/8"	3/8"
023108	5/8"	1/2"
023126	3/4"	3/8"
023128	3/4"	1/2"

Heavy Duty Radiator Caps

Velvac is now featuring All-Makes of Heavy Duty Truck radiator caps

NEW

Part No.	Deep Neck	Pressure (lbs)
10205	1"	4
10206	1"	7
10208	3/4"	4
10238	threaded filler neck	16
10308	34"	4



Part No. 10205



Part No. 10206



Part No. 10208



Part No. 10238



Part No. 10308



• For Radiator Overflow Reservoir Systems

NEW

Part No.	I.D. Size	Deep Neck	Pressure (lbs)
10227	32MM	16MM	13
10228	—	3/4"	7
10229	—	3/4"	13
10230	—	3/4"	16
10231	—	3/4"	16 vented
10233	32MM	16MM	16
10237	—	3/4"	10
10241	31MM	10MM	13
10242	31MM	10MM	16
10327	32MM	16MM	13
10328	—	3/4"	7
10329	—	3/4"	13
10330	—	3/4"	16
10331	—	3/4"	16 vented
10333	32MM	16MM	16
10337	—	3/4"	10

NOTE: Refer to www.velvac.com for all makes cross reference guide

FITTINGS

Part No.	O.D. Size	Deep Neck	Pressure (lbs)
10281	"B" 2-11/16"	3/4"	4
10282	"B" 2-11/16"	3/4"	7
10283	"B" 2-11/16"	3/4"	10
10292*	"B" 2-11/16"	3/4"	7
10293*	"B" 2-11/16"	3/4"	10
10294*	"B" 2-11/16"	3/4"	15

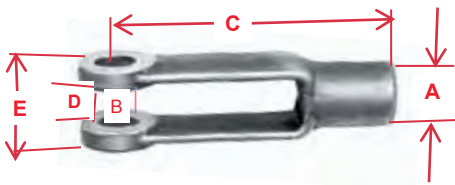
NEW



* For Radiator Overflow Reservoir Systems
Stant® is a registered trademark of Stant

NOTE: An industry leader: Stant®

Clevis and Clevis Pin Kits

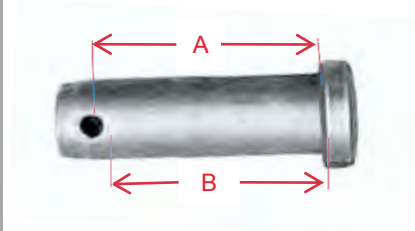


- Each kit includes one yoke, clevis pin and cotter pin
- Forged steel construction
- Zinc-plated for corrosion resistance

Part No.	A	B	C	D	E	F	G	H
019049	5/8" -18	1/2"	1-7/8"	9/16"	1-1/4"	1/2"	1-1/2"	1-3/8"
019050	1/2" -20	1/2"	1-7/8"	9/16"	1-1/4"	1/2"	1-1/2"	1-3/8"
019051	5/8" -18	1/2"	4-15/16"	9/16"	1-1/4"	1/2"	1-5/8"	1-3/8"
019088*	5/8" -18	1/2"	1-7/8"	9/16"	1-1/4"	1/2"	1-1/2"	1-11/32"

*Includes 3/8" x 1/4" reducer bushing and 5/8" - 18 hex nut

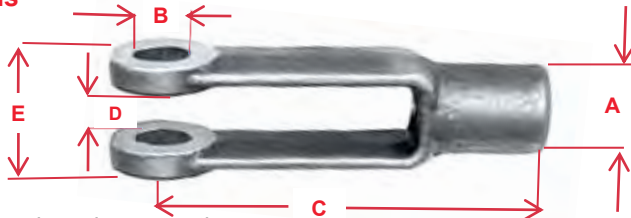
Standard Clevis Pins



Nominal

Part No.	Size	A	B
019057	1/4	0.672	0.633
019059	5/16	0.812	0.757
019061	3/8	0.938	0.883
019065	1/2	1.203	1.133
019067	1/2	1.343	1.273
019069	1/2	1.593	1.523
019071	5/8	1.453	1.383
019073	5/8	1.593	1.523

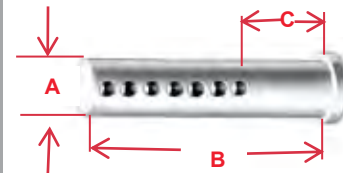
Clevis



- Forged steel construction
- Zinc-plated for corrosion resistance

Part No.	A	B	C	D	E
019002	1/4" -28	1/4"	2"	9/32"	5/8"
019003	5/16" -24	5/16"	2-1/4"	11/32"	3/4"
019004	3/8" -24	3/8"	2-1/2"	7/16"	7/8"
019006	1/2" -20	1/2"	3"	9/16"	1-1/8"
019009	1/2" -20	1/2"	1-7/8"	9/16"	1-1/4"
019011	5/8" -18	1/2"	1-7/8"	9/16"	1-1/4"
019013	5/8" -18	1/2"	2-5/16"	9/16"	1-1/2"
019015	5/8" -18	5/8"	4-15/16"	11/16"	1-3/8"
019017	5/8" -18	5/8"	2-5/16"	9/16"	1-1/2"

Universal Clevis Pins



- Each includes cotter pin

Part No.	A	B	C*
019058	1/4"	2"	17/32"
019060	5/16"	2"	9/16"
019062	3/8"	2"	17/32"
019064	7/16"	2"	9/16"
019070	1/2"	2"	9/16"
019072	5/8"	3"	9/32"

*Holes are spaced at 1/4" intervals

Mechanics Wire



- Heavy-duty black annealed construction

Part No.	Wire Size	Roll Weight
090142	14 ga.	2 lb.
090145	14 ga.	5 lb.
090162	16 ga.	2 lb.
090165	16 ga.	5 lb.
090182	18 ga.	2 lb.
090185	18 ga.	5 lb.