



Air Brake & Air Accessory Valves

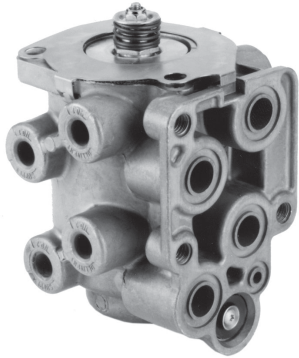
pilot relay • foot • dash control • reducing tractor protection • limiting & quick release high temp governor • air solenoid • pilot

Foot Valve (E-7 Style)

Part No. 034077

Replaces Bendix #288383

- Navistar basic valve kit
- Dual circuit valve
- Threaded side ports: (4) 1/4" supply, (4) 1/4" delivery
- Rear ports: 1/8" supply, (2) 1/2" supply, (2) 1/2" delivery
- 1/2" exhaust port with diaphragm

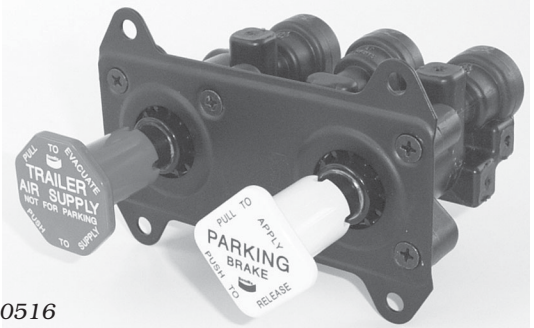


Dash Control Valve (MV-3 Style)

Part No. 034081

Replaces Bendix #065157 & #800516

- Combination PP-1 and PP-7 valve
- 1/4" diameter horizontal mounting holes at 4-7/32" O.C.
- 1/4" diameter vertical mounting holes at 3" O.C.

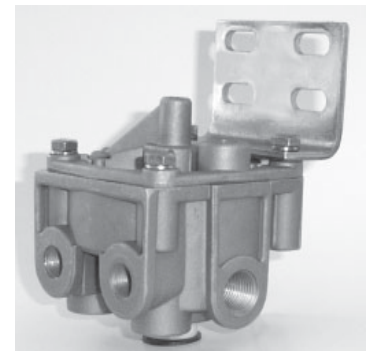
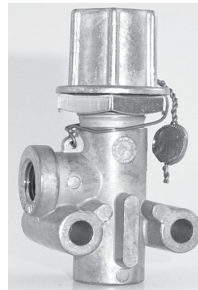


Pressure Reducing Valve (RV-1 Style)

Part No. 034085

Replaces Bendix #283590

- Used where a constant set pressure lower than supply pressure is required
- Adjustable – factory preset at 70 psi
- 1/4" NPT supply and delivery ports



Pilot Relay Valve (R-12P Style)

Part No. 034076

Replaces Bendix #065476 & #109264

- 1/4" NPT control port
- (2) 1/2" NPT supply ports
- (4) 3/8" NPT delivery ports
- 0 psi cracking pressure
- Universal mounting bracket included



*Part No. 034080 —
1/4"-20 female thread for knob or cable
(as shown, top portion only is different)*

Part No. 034079 — 5/16" Pin

Dash Control Valves (PP-7 Style)

Part Nos. 034079, 034080

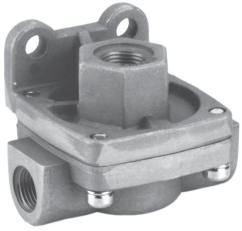
Replaces Bendix #288241 & 106113, #288242

- Automatic pressure release at 40 psi
- Non-override at 25 psi
- 1/8" NPT supply and control ports
- 1/4" NPT delivery port
- 1/4" threaded exhaust port
- Knob and mounting nut sold separately (see catalog)



VELVAC®

Quality Driven Vehicle Components Since 1934

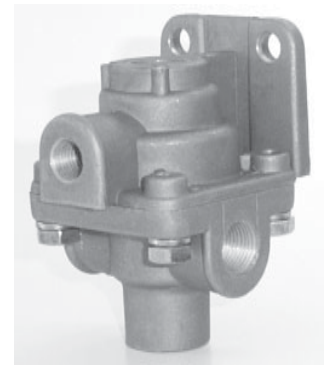


Quick Release Valve (QR-1 Style)

Part No. 034078

Replaces Bendix #229813

- 1/4" NPT delivery port
- 3/8" supply port
- 3/8" NPT exhaust port
- 11/32" diameter mounting holes at 1-1/2" O.C.
- 1 psi crack pressure

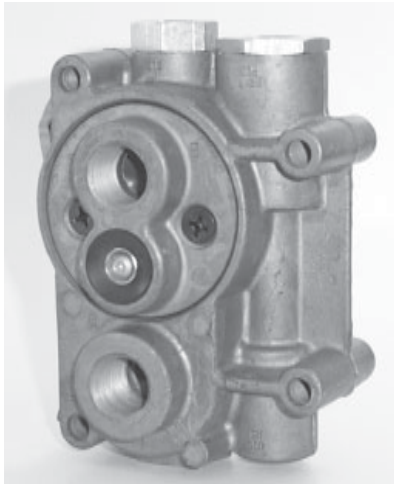


Limiting and Quick Release Valve (LQ-2 Style)

Part No. 034084

Replaces Bendix #229505 & Midland #KN-32030

- 1/4" NPT control port
- 3/8" delivery (2), supply and exhaust ports
- 19/32" diameter mounting holes at 1-1/2" O.C.



Tractor Protection Valve (TP-5 Style)

Part No. 034082

Replaces Bendix #288605

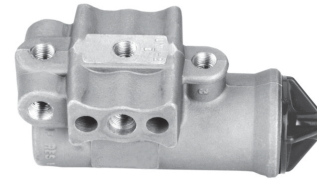
- Formerly VM-2 style control valve manifold
- 3/8" NPT service and trailer service/emergency supply ports (rear)
- 1/4" NPT stop light switch port
- 3/8" NPT trailer control port
- 1/2" NPT trailer service and trailer emergency supply ports

Air Governor — High Temp (D-2 Style)

Part No. 034083

Replaces Bendix #284358 & Midland #KN-18534

- Designed with high temperature withstanding O-rings
- Same specs as our standard D-2 style governor (see catalog page 44, Part No. 032126)



Three-Way Pilot Valve

Part No. 034074

Replaces Neway #90054079

- For Neway suspension system
- 1/4" NPT supply/delivery/exhaust ports



Air Solenoid Valve

Part No. 034075

Replaces Neway #90054075

- For Neway suspension system
- 12 VDC, 10 watts
- 100 psi maximum operating pressure
- 1/4" threads



VELVAC

Quality Driven Vehicle Components Since 1934