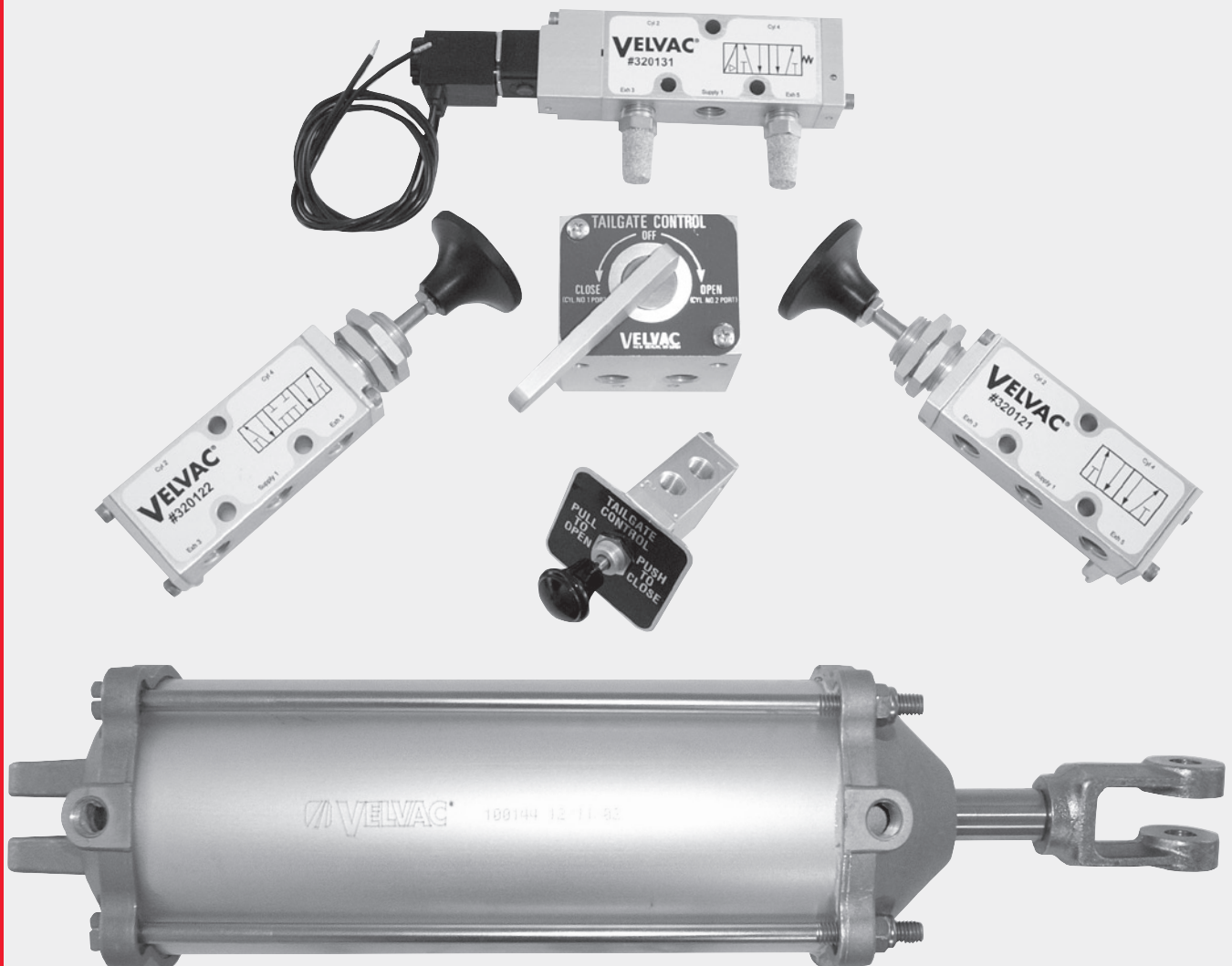


# **NEW!** Air Valves, Cylinder Kit & Air Accessory Valve Kit

four-way push/pull valves • air cylinders  
four-way rotary handle valve • four-way solenoid valve  
air operated tailgate lock kit • PTO air shift kit



# **VELVAC**®

*Quality Driven Vehicle Components Since 1934*

# NEW! Air Valves & Accessories

## VALVES ON THIS PAGE FEATURE

- anodized aluminum clear-coated bodies
- operating temperature range from  $-40^{\circ}\text{F}$  to  $+180^{\circ}\text{F}$
- nitrile seals for long cycle life
- high impact knobs with faceplates
- stainless steel hardware
- push/pull and rotary valve operating pressure range from vacuum to 150 psi
- solenoid valve operating pressure range from 35 psi to 150 psi

## Four-Way Push/Pull Valves

**Newly designed orifice area increases airflow 30–40% in comparison to previous valves!**

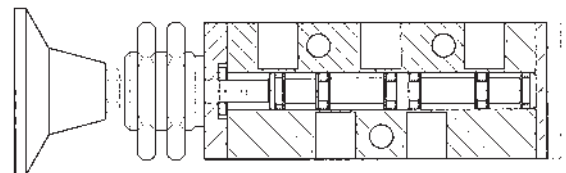


Threaded aluminum mounting boss for 1" diameter through hole mounting—nuts included

Aluminum shaft with stainless steel extension and delrin detent ring provides easy identification of valve position and long cycle life —

**tested to over FIVE MILLION cycles**

Includes TWO faceplates:  
Pull to Open/Push to Close  
Pull to Raise/Push to Lower



(5) 1/4"–18 FPT ports

(3) 9/32" dia. body mounting holes

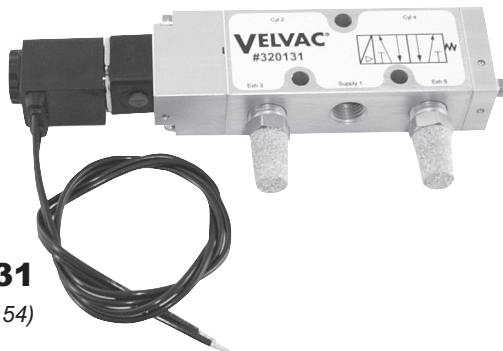
### Part No. 320121 – Two Position Valve

(Replaces Part No. 320107)

### Part No. 320122 – Three Position, Holding Type Valve

(Replaces Part No. 320108)

## Four-Way Electronic Solenoid Valve



### Part No. 320131

(Replaces Part No. 320154)

- Features newly designed orifice area increasing airflow 30–40 percent over previous valves
- Manual override switch for manual operation
- (3) 9/32" diameter valve body mounting holes, (5) 1/4"–18 FPT ports
- Exhaust cone filters included

#### Replacement Parts:

Part No.	Description
320132	Electrical Coil
320133	Solenoid Mounting Nut
030092	Cone Style Muffler — 1/4"

## The "Viper" Part No. 320124



- Compact, high-flow valve provides flow performance comparable to larger valves
- One piece stainless steel shaft
- Can be mounted using (2) 3/16" diameter body mounting holes or through a 1/2" diameter through hole
- (3) 1/8" NPT ports and (2) 10–32 exhaust ports
- Includes Pull to Open/Push to Close faceplate

## Four-Way Rotary Handle Valve

### Part No. 320123

(Replaces Part No. 321025)



- Includes solid one-piece knob and TWO faceplates (Raise/Lower and Open/Close)
- (3) 1/4"–18 FPT ports



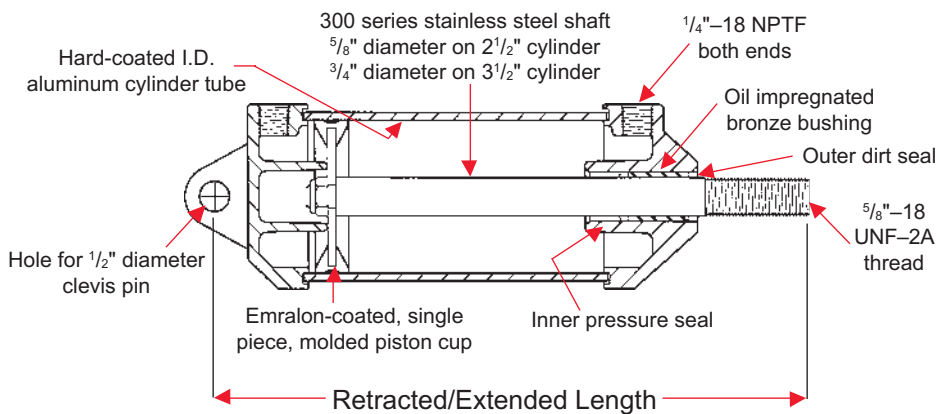
— for more info

**call 262/786-0700 or 800/783-8871 • fax**

# Air Cylinders



Cylinder Diameter	Port Size	Shaft Diameter	Shaft Thread	Operating Pressure	Maximum Pressure	Thrust at 100 psi	Draw at 100 psi
2 1/2"	(2) 1/4"	5/8"	5/8"-18	100 psi	120 psi	483 lbs.	452 lbs.
3 1/2"	(2) 1/4"	3/4"	5/8"-18	100 psi	120 psi	962 lbs.	918 lbs.



- Stainless steel cylinder shaft provides excellent corrosion resistance and extended cycle life
- Lightweight, corrosion resistant, aluminum cylinder tube with die cast aluminum end caps
- Rear clevis cast as integral part of the rear cover for improved durability and mounting integrity
- Double acting, Emralon-coated piston cup assures smooth, long lasting operation even in cold weather conditions
- Front end cap assembly includes pressure seal, dirt seal and oil impregnated bronze bushing
- Cylinder tube is imprinted with part number and date code for quick identification
- ALL cylinders are factory pressure and leak tested prior to shipping

**See back of this brochure for new air cylinder and PTO kits!**

## 2 1/2" Diameter Cylinders

Cylinder Part No.	Cylinder Type	Stroke	Retracted Length	Extended Length	Replaces Cylinder	Front Cover Kit	Rear Cover Kit	Piston Cup Kit	Shaft Kit
100122	Push/Pull	4"	9.37"	13.37"	100001	101066	101067	101068	100117
100125	Spring Return Norm. Ext.	4"	10.71"	14.71"	100047	101066	101067	101068	100117
100123	Push/Pull	6"	11.37"	17.37"	100004	101066	101067	101068	100118
100133	Spring Return Norm. Ext.	6"	13.37"	19.37"	100010	101066	101067	101068	100118
100126	Spring Return Norm. Ret.	6"	13.87"	19.37"	100016	101066	101067	101068	100119
100124	Push/Pull	8"	13.37"	21.37"	100007	101066	101067	101068	100119

NOTE: Cover, piston cup and shaft kits shown above can also be used for *previous style* 2 1/2" diameter cylinders.

## 3 1/2" Diameter Cylinders

100131	Push/Pull	6"	13.60"	20.23"	101006	101069	101070	101071	100127
100132	Push/Pull	8"	15.60"	24.23"	—	101069	101070	101071	100128
100136	Push/Pull	8"	18.35"	26.98"	101028	101069	101070	101071	100135
100137*	Push/Pull	8"	15.60"	24.23"	101028	101069	101070	101071	100128

\* Kit contains air cylinder Part No. 100132 and extended clevis kit Part No. 019051. Use this kit or extended shaft cylinder Part No. 100136 when replacing previous cylinder Part No. 101028.



# NEW! Ox Bodies Tailgate Lock Kit



## Kit Part No. 100144-7

- Designed to fit Ox dump bodies
- Air cylinder features a stainless steel shaft and aluminum cylinder tube with die cast aluminum end caps
- Kit includes 3½" x 8" air cylinder with special shaft, clevis hardware and push-lock fittings

**SEE OUR FULL LINE CATALOG FOR ADDITIONAL AIR OPERATED TAILGATE LOCK KITS AS WELL AS SOLENOID OPERATED TAILGATE LOCK KITS; CUSTOM KITS ALSO AVAILABLE.**

# NEW! Power Take-Off Air Shift Kit

## Kit Part No. 034070

- Power take-off kit controls add-on air-controlled accessories
- Kit includes control valve, indicator light, 1/4" nylon tubing (50') and fittings, cable, bracket and pressure protection valve – control valve assembly, indicator light and cable also sold separately



### Replacement Parts:

Part No.	Description
034071	Air Shift Valve Assembly
034072	Indicator Light
034073	PTO Cable
032086	Pressure Protection Valve

for more information

**call 262/786-0700 or 800/783-8871**  
**fax 262/786-4101 • e-mail [sales@velvac.com](mailto:sales@velvac.com)**



# VELVAC

Quality Driven Vehicle Components Since 1934

Velvac Incorporated • 2405 South Calhoun Road • New Berlin, Wisconsin 53151-2709 • [www.velvac.com](http://www.velvac.com)

262.786.0700 • 800.783.8871 • Fax 262.786.4101 • [sales@velvac.com](mailto:sales@velvac.com)